

PHILIPS

MultiOne interface
USB2ZigBee

LCN8650/11



Installation Instructions

Instructions d'installation
Instrucciones de instalación

Istruzioni per l'installazione
Installatie-instructies

Installationsanweisungen
インストール手順

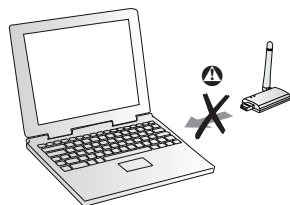
安裝指示书
بيكرت لانا تاداشورا

1

Request User Software Key

www.philips.com/multione

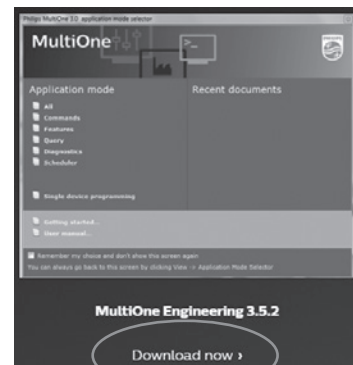
- Windows 7 (or higher) OS with Internet Explorer
- Microsoft .NET Framework 4.6.1 (or higher)
- Min. 45 MB free hard disk space
- One free USB 2.0 port
- Internet connection



2



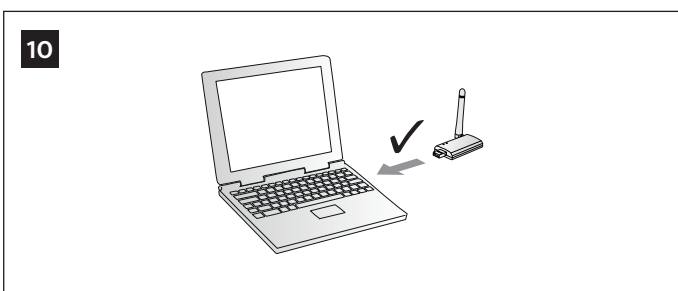
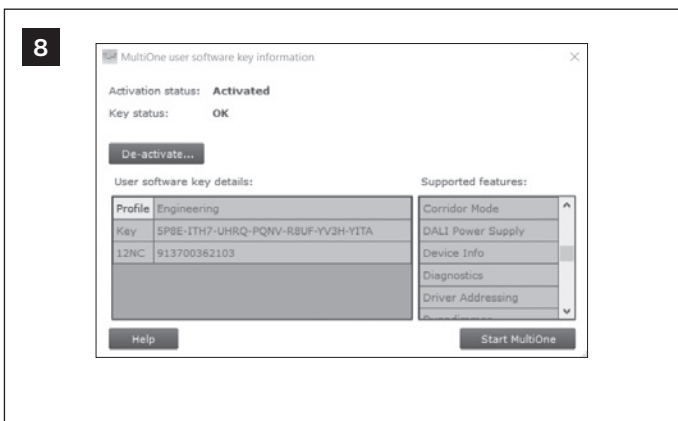
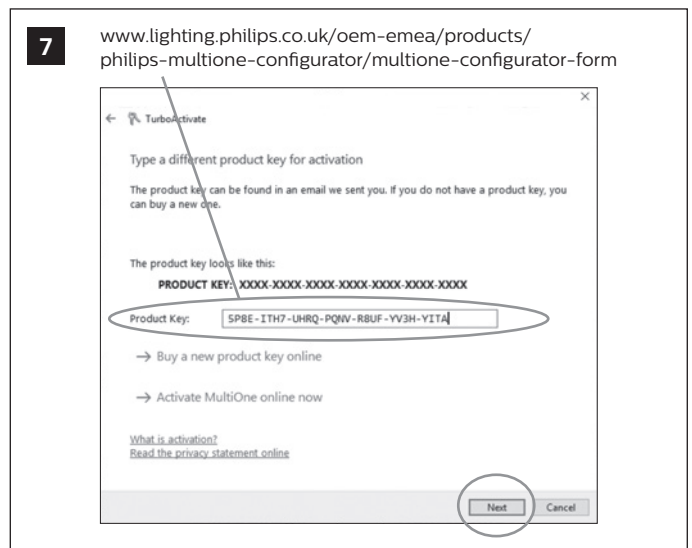
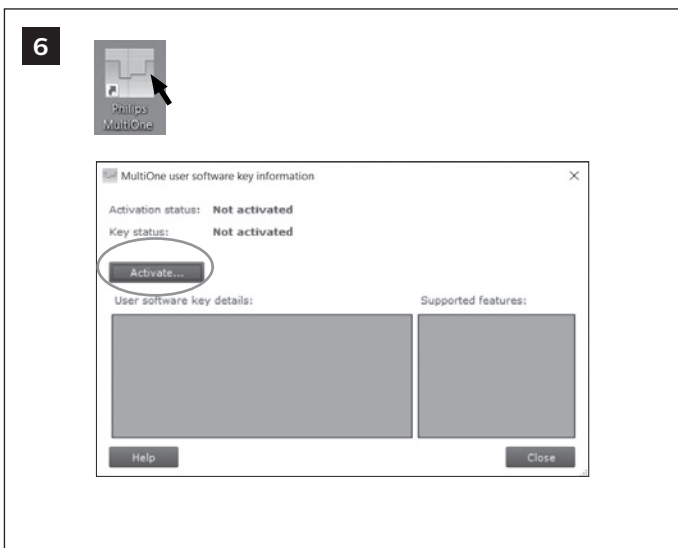
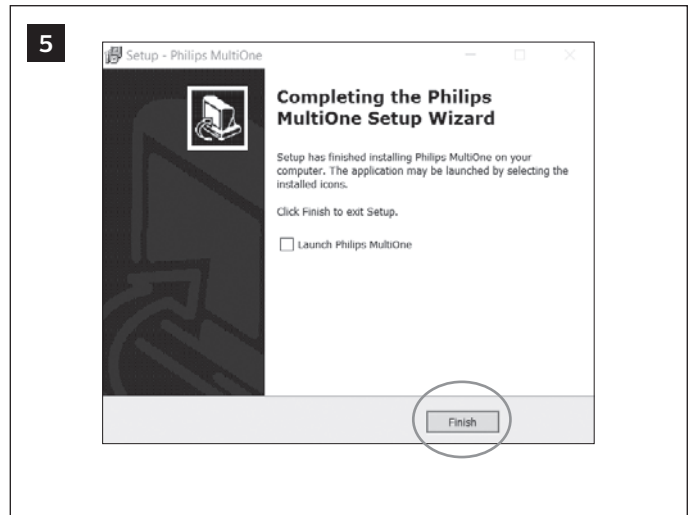
Download
www.philips.com/multione



3

Philips MultiOne.exe





Hereby, Philips Lighting declares that the radio equipment type LCN8650/11 is in compliance with Directive 2014/53/EU. The full text of the EU declaration of conformity is available at the following Internet address: <http://www.philips.com/red>

